



Innovating Minds

GM UNIVERSITY

P.B.Road, Davanagere, Karnataka, India - 577006



GM University

Research & Innovation Division

Igniting Innovation,
Inspiring Transformation.



8000+
Students



65+
Programs



350+
Faculty Members



54 Acre
Green Serene Vibrant Campus

Contents

Founders and Officers	Page 03
GM University Organization	Page 04
Research Focus	Page 05
PhD Program Highlights	Page 06
Research Mentoring	Page 07
Research Support @ GMU	Page 08
Publications	Page 09
Message from Dean	Page 10
Message from Vice-Chancellor	Page 11

GM University
Founders



G Mallikarjunappa
Founder Chairman,
Srishyla Educational Trust



GM Prasanna Kumar
Chairman



GM Lingaraju
Secretary



GS Anith Kumar
Treasurer

GM University
Officers



GM Lingaraju
Chancellor



Dr. S.R. Shankapal
Vice Chancellor



Dr. H.D. Maheshappa
Pro Vice Chancellor



Dr. B S Sunil Kumar
Registrar



GM University Organisation

Academics

- Faculty of Engineering and Technology (FET)
- Faculty of Computing and IT (FCIT)
- Faculty of Basic and Applied Sciences (FBAS)
- Faculty of Commerce and Management (FCM)
- Faculty of Legal Studies and Public Policy (FLSPP)
- Faculty of Humanities and Social Sciences (FHSS)
- Faculty of Health and Allied Sciences (FHAS)
- Faculty of Tourism and Hospitality (FTH)
- Faculty of Architecture, Art and Design (FAAD)
- Faculty of Agri Technology and Agri Sciences (FATS)
- Faculty of Education (FED)
- GM School of Advanced Studies (GMSAS)
- GM School of Business (GMBS)

Research

- PhD Programs
- Centres of Excellence
- Sponsored/Grant Research
- Research Publications
- Conferences
- Publication of In-House-Research Bulletin
- Organising Prestigious Lectures
- IPR and Patents
- Research Seed Money Funding



Competency, Skill & Vocational Training

- School of Vocational Training
- School of Digital Technical Competency Development
- Centre for Online Education-Certification Programs

IDEA Lab

- GM Techno Centre-Centre for Technical Consultancy
- Centre for Innovation & Design Thinking
- Product Design Centre
- Centre for Technology Product Incubation
- Centre for Business Incubation & Entrepreneurship
- Centre for Collaboration & Partnership Development



Research Focus

1. Artificial Intelligence and Machine Learning

- Explainable AI (XAI) and Trustworthy AI
- AI for Healthcare and Medical Diagnostics
- Natural Language Processing (NLP) & Regional Language Processing
- AI-Driven Smart Agriculture
- Cybersecurity and Threat Detection Using AI

2. Sustainable Energy and Environment

- Renewable Energy Technologies and Storage Solutions
- Environmental Monitoring and Pollution Control
- Energy-Efficient Building and Smart Grid Systems
- Waste-to-Energy and Circular Economy Solutions
- Sustainable Materials

3. Cybersecurity and Blockchain

- Blockchain for Data Privacy and Security
- AI-Driven Threat Detection & Response in Cybersecurity
- Blockchain-Based Secure Supply Chain Management
- Cryptography and Quantum-Resistant Algorithms
- Blockchain for Decentralized Finance (DeFi) & Smart Contracts Security

4. Smart Infrastructure and Urban Development

- Sustainable Urban Planning and Green Infrastructure
- Smart Transportation Systems
- IoT and Data-Driven Infrastructure Management
- Smart Energy Management in Urban Settings
- Urban Resilience and Disaster Preparedness

5. Healthcare Innovation and Biotechnology

- Precision Medicine and Genomics
- Tissue Engineering and Regenerative Medicine
- AI and Big Data in Healthcare
- Biotechnology for Infectious Disease Control
- Biomanufacturing and Drug Development

Ph.D. Program Highlights

Pursue Your Research Excellence with GM University

GM University's PhD program offers a supportive, resource-rich environment for groundbreaking research across diverse fields. Available in full-time and part-time modes, it provides flexibility for professionals and academics to pursue advanced research while balancing other commitments. With expert guidance and state-of-the-art facilities, we nurture impactful scholarly contributions.

Faculty of Engineering and Technology

- Computer Science and Engineering
- Information Science and Engineering
- Artificial Intelligence and Machine Learning
- Electronics and Communication and Engineering
- Electrical and Electronics Engineering
- Mechanical Engineering
- Civil Engineering

More than 60 scholars have enrolled for Ph.D. Programme.

Faculty of Commerce & Management

- Commerce
- Management

Faculty of Basic & Applied Sciences

- Physics
- Chemistry
- Mathematics
- Botany
- Zoology

Why Choose GM University for Your Ph.D.?

1. Research-Driven Environment

Access to advanced facilities and research centers in various fields.

2. Mentorship by Leading Scholars

Guidance from distinguished faculty for a rigorous research experience.

3. International Collaboration Opportunities

Opportunities for exchange programs and global research initiatives.

4. Industry Partnerships

Hands-on research experience through collaborations with industry leaders

5. Scholarships and Financial Support

Scholarships and funding options to support PhD candidates

6. Professional Development

Workshops and seminars to enhance research, writing, and presentation skills

GM University is committed to a rigorous Ph.D. program with a transparent selection process based on academic excellence and research potential. Regular reviews assess candidates research quality and performance, while continuous progress monitoring ensures timely completion with strong mentorship



Research Mentoring

Professors of Eminence Programme

The Professors of Eminence Programme at GM University is a prestigious initiative aimed at fostering academic excellence and strengthening research collaborations. The programme is initiated by GM University in the month of February 2024 inviting distinguished scholars and seasoned experts from DRDO, ISRO, BARC, IISc, GKVK, and renowned Business schools to engage with the University's faculty, research scholars, and students, creating opportunities for knowledge exchange, mentorship, and academic growth.



Key Highlights of the Programme:

Distinguished Scholars

The program features prominent professors and researchers, often from diverse disciplines, who bring years of expertise and significant contributions to their fields. These eminent professors provide valuable insights, helping shape GM University's research and academic direction.

Academic and Research Collaboration

Through lectures, seminars, and collaborative projects, the Professor of Eminence Programme encourages interdisciplinary research and fosters an environment of innovation. Visiting professors work alongside the university's research teams, providing guidance on advanced methodologies and helping to refine research outcomes.

Enhanced Learning Opportunities

Students benefit immensely from interacting with these experts through guest lectures, workshops, and one-on-one sessions. These interactions enrich their academic experience, expose them to global perspectives, and inspire future research initiatives.

Networking and Industry Linkages

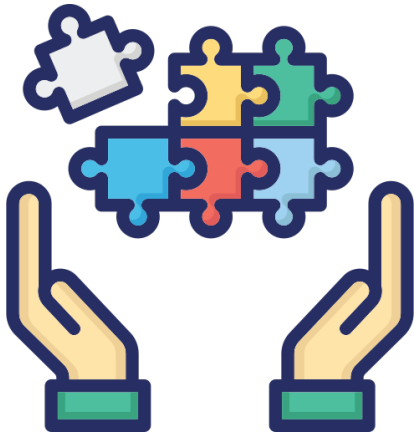
By involving professors with strong academic and industry connections, the program helps build networks that can lead to collaborative projects, funding opportunities, and enhanced career prospects for students and faculty.

The Professor of Eminence Programme at GM University thus exemplifies the institution's commitment to high academic standards and its vision to be a leader in educational innovation and research excellence.

Research Support at GM University

Empowering Innovation

GM University is dedicated to fostering a robust research ecosystem by providing state-of-the-art facilities, funding opportunities, and collaborative platforms to empower researchers in diverse disciplines. Below is an overview of our comprehensive research support system.



01 Advanced Research Facilities

State-of-the-Art Laboratories: Cutting-edge infrastructure for engineering, science, and management research.

Specialized Equipment: High-performance computing facilities, analytical instruments, and prototyping tools.

Collaborative Spaces: Innovation hubs and coworking spaces designed for interdisciplinary projects.

03 Knowledge Resources

Research Resonance: Bi-annual publication highlighting university research achievements.

Access to Journals & Databases: Subscriptions to Scopus, Web of Science, IEEE Xplore, & more.

Publishing Support: Assistance with authoring and publishing research monographs.

05 Recognition and Rewards

Research Awards: Annual recognition for outstanding research contributions.

Publication Incentives: Financial rewards for publishing in high-impact journals.

Academic Advancement: Opportunities for career growth based on research achievements.

02 Funding and Grants

Seed Money: Financial assistance for pilot studies and novel research ideas.

Conference Support: Sponsorship for attending and presenting at leading global conferences.

Teaching Assistantship: Teaching Assistance-ship for fulltime Research Scholars.

External Grant Assistance: Guidance in applying for national and international funding from agencies like DST, CSIR, DBT, and more.

Funded Project Incentives: Financial rewards for faculty and researchers for external funded projects.

04 Mentorship and Networking

Professors of Eminence Programs: Connect with leading minds for guidance.

Workshops and Seminars: Regular events featuring experts from academia and industry.

Research Collaborations: Partnerships with institutions and organizations worldwide.

06 Patent Support

Awareness: Workshops on IPR are conducted to educate and guide inventors effectively.

Patent Filing Support: Guidance and assistance with patent searches, drafting, and filing processes.

Financial and Commercial Aid: Financial support for commercialization and licensing is provided.

Publications, Conference & Workshops

01

Publications

At GM University, research publications are central to academic excellence, highlighting the contributions of faculty, researchers, and students. The university fosters a research culture by encouraging dissemination through peer-reviewed journals, conferences, and academic books.

The details of the research Publications are available in gmu.ac.in

02

Conference & Workshops

GM University hosts conferences and workshops to foster research culture, promoting idea sharing, collaboration, and interdisciplinary research. These events offer opportunities for faculty, students, and experts to engage, exchange knowledge, and enhance research skills.

GM University hosts an annual international conference, bringing together experts from Engineering, Science, Commerce, and Management. The event fosters research presentation, cross-disciplinary collaboration, and knowledge exchange, emphasizing the university's commitment to academic excellence and innovation.

03

Research Resonance

Research Resonance is GM University's bi-annual in-house research bulletin, showcasing innovative projects, breakthrough findings, and collaborative efforts. It serves as a platform to share impactful research outcomes and foster interdisciplinary connections. The bulletin reflects the University's commitment to academic excellence and societal impact.

Goals of Research Resonance

Encouraging Knowledge Sharing: The bulletin promotes collaboration by making research accessible to the university community and external stakeholders.

Strengthening Research Culture: Regular publication nurtures a culture of inquiry, encouraging active contributions from faculty and students.

Boosting GM University's Reputation: Research Resonance enhances GM University's visibility, attracting collaborators, students, and funding agencies.

GM University has published the first issue of Research Resonance on August 202

04

Book of Abstracts

The Book of Abstracts for 2023-24 features 106 student-led projects, highlighting innovative research across various disciplines and showcasing the dedication and contributions of GM University's students.

GM University has published the first issue of Book of Abstract on May 2024.



Message from Dean



Dr. Bharath K N
Dean-Research

At GM University, we believe that research is the driving force behind academic excellence and societal advancement. Our mission is to cultivate a dynamic research environment that not only promotes academic inquiry but also addresses real-world challenges. We are committed to nurturing a culture of innovation, collaboration, and impact that empowers our students, faculty, and partners to push the boundaries of knowledge and create sustainable solutions for the future.

Our university is home to a vibrant community of researchers engaged in a diverse range of fields, from advanced materials and environmental science to healthcare innovations and intelligent systems. Our state-of-the-art facilities and partnerships with leading institutions and industries provide the ideal ecosystem to foster groundbreaking discoveries and transformative research. I invite you to explore the research opportunities and facilities we offer, and to join us in our journey of innovation and knowledge creation. Together, let's build a better, more sustainable future.



Dr. Swaroop K
Associate Dean-Research



Dr. Kavitha K J
Associate Dean-Research



Dr. Suprith P G
Assistant Dean-Research



Dr. Amith Kumar B
Assistant Dean-Research

Message from Vice-Chancellor



It gives me immense pride and joy to present the Research Brochure of GM University, a testament to our unwavering commitment to academic excellence, innovation, and societal progress. At GM University, we believe that research is the cornerstone of growth, bridging the gap between knowledge and application, and paving the way for transformative solutions to global challenges.

Our institution is home to a vibrant community of researchers and scholars dedicated to pushing the boundaries of knowledge in science, engineering, management, and beyond. We are steadfast in fostering a culture of inquiry, collaboration, and creativity that not only enriches the academic experience but also contributes meaningfully to industry and society. The research initiatives and achievements highlighted in this brochure reflect the diligence, passion, and intellectual curiosity of our faculty and students. These endeavors underscore our mission to be a beacon of innovation, addressing critical issues with impactful research.

I take this opportunity to express my heartfelt gratitude to all our researchers, faculty members, and industry collaborators who have contributed to making GM University a hub of excellence. Your efforts inspire us to reach greater heights.

As you browse through this brochure, I encourage you to explore the remarkable work being carried out at GM University. Let it serve as a source of inspiration, a catalyst for collaboration, and a reminder of the incredible potential that lies within us when we dare to question, explore, and innovate.

Together, let us continue to strive for a future where knowledge transforms lives and creates a sustainable, equitable world.

Warm regards,

Dr. S.R Shankapal
Vice Chancellor, GM University



GM UNIVERSITY
P.B.Road, Davanagere, Karnataka, India - 577006



India



Karnataka



Davanagere

Connect us

GM UNIVERSITY

P.B.Road, Davanagere, Karnataka, India-577006

☎ +91 98444 00397, +91 99168 22136

✉ dean.res@gmu.ac.in

🌐 www.gmu.ac.in

📍 FVGM+6W Davanagere, Karantaka



Apply Now For
Online Admission

Admission contact

☎ 93640 99720, 93640 99712, 63642 59993

✉ admissions@gmu.ac.in